

# WARD HALL



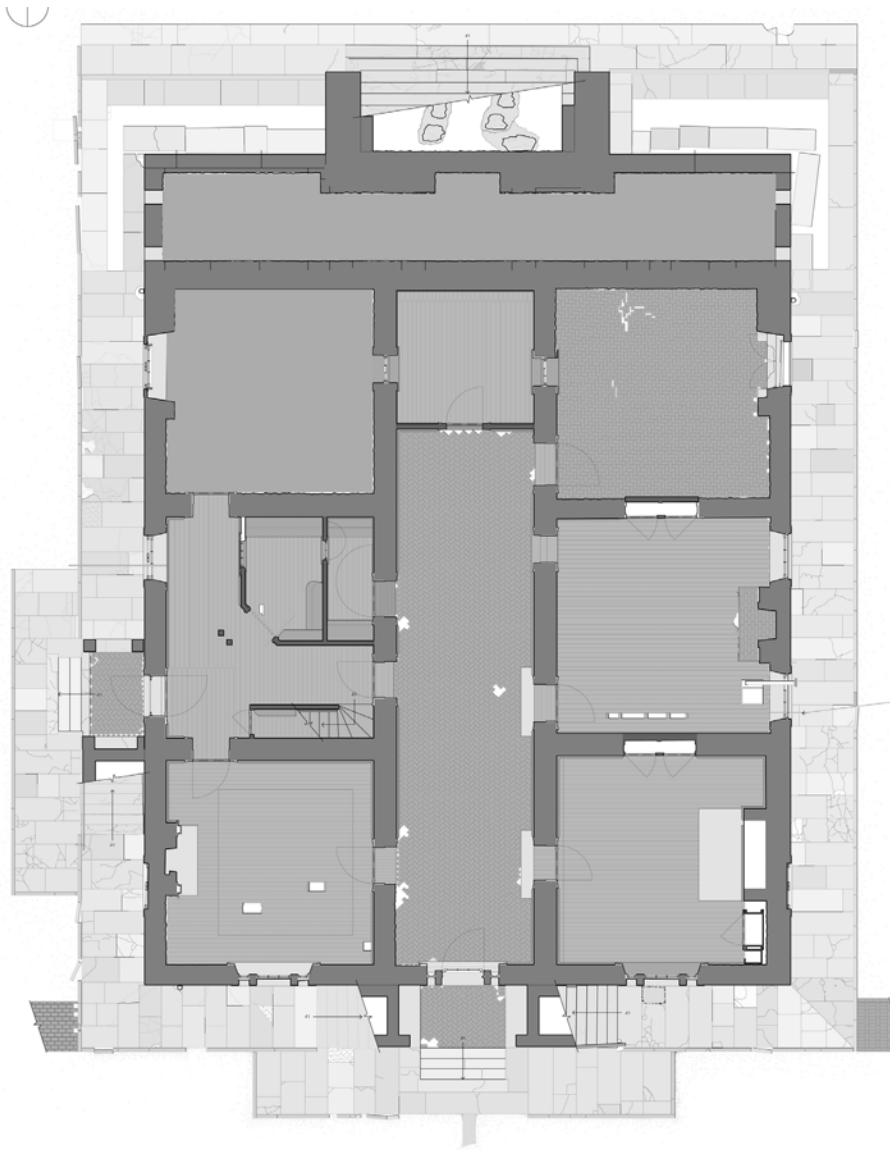
MAJOR THOMAS LEWINSKI (c.1800-1881) ARCHITECT  
GEORGETOWN-FRANKFORT PIKE, SCOTT COUNTY, KENTUCKY



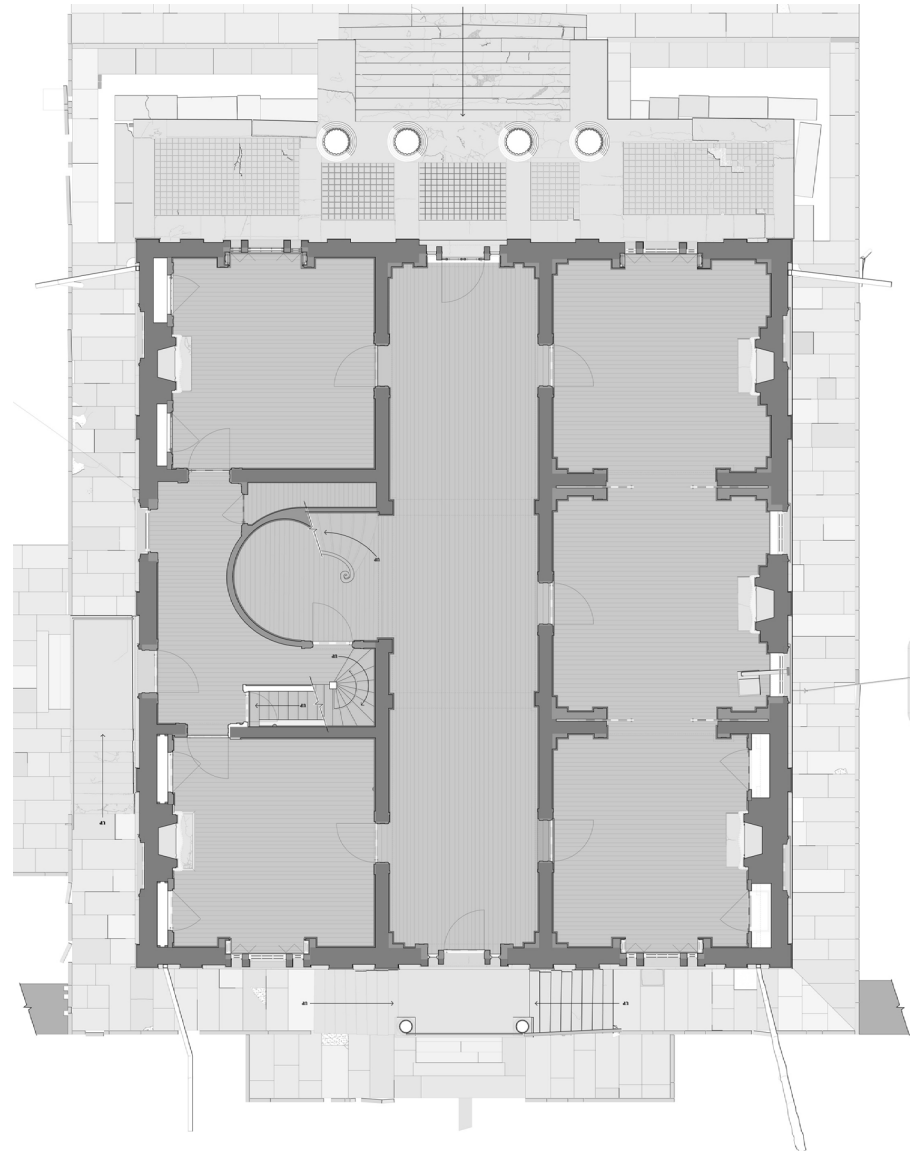
Site Plan



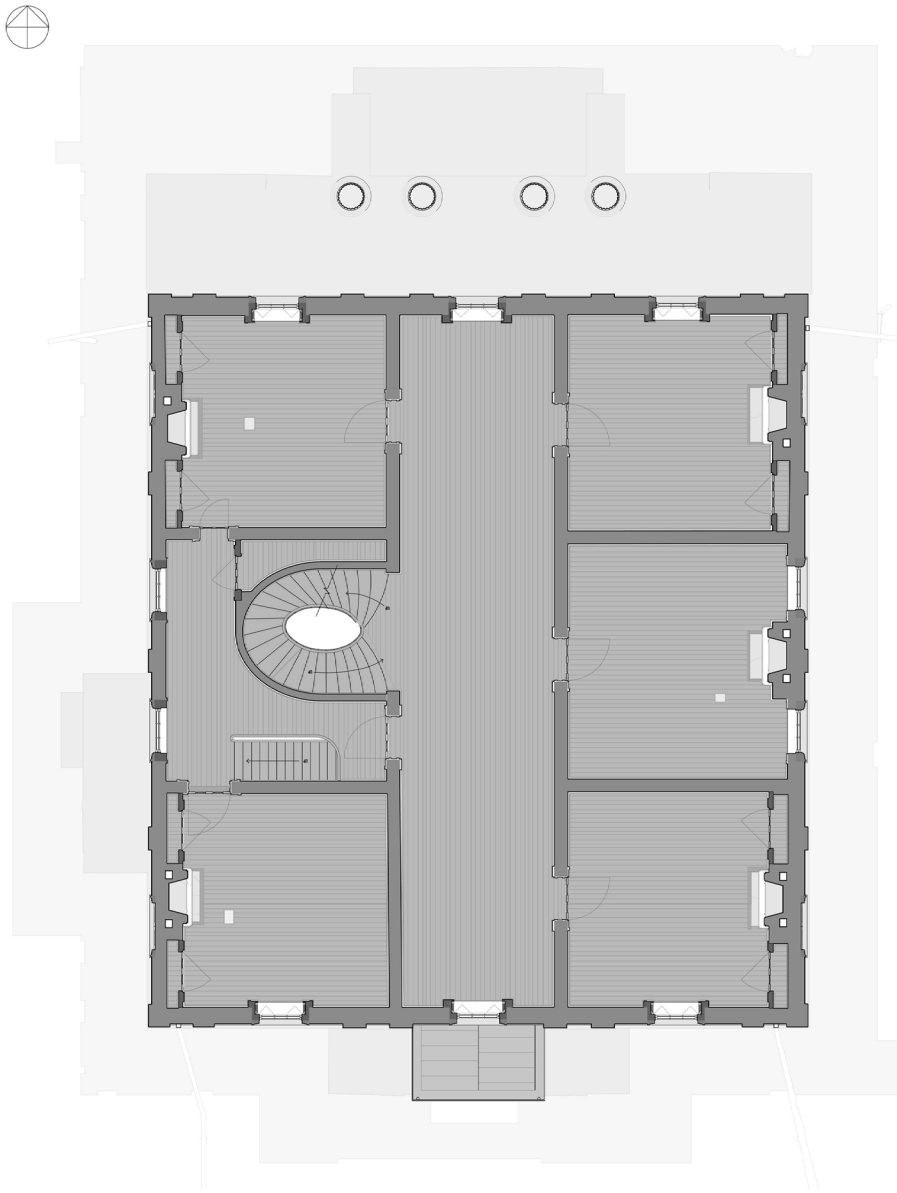
Section



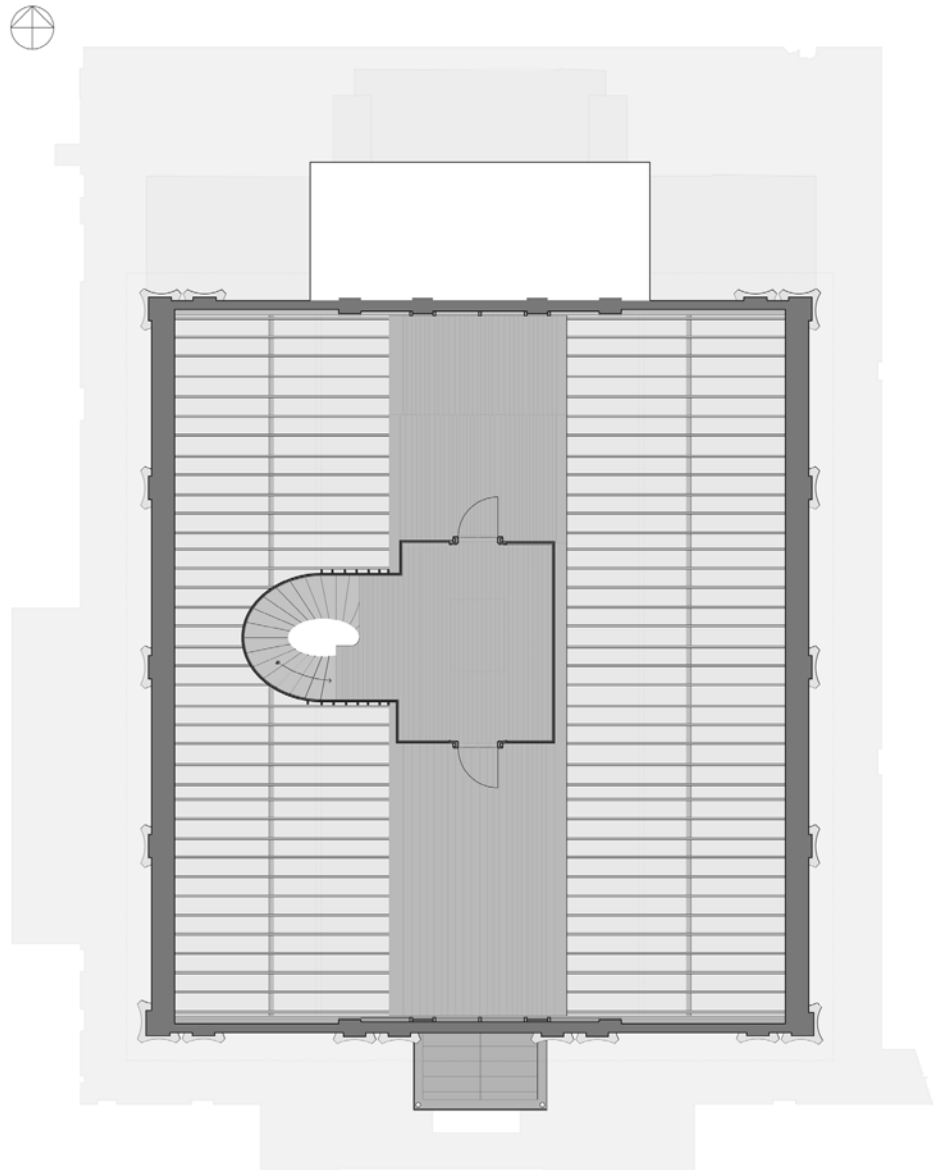
Basement Plan



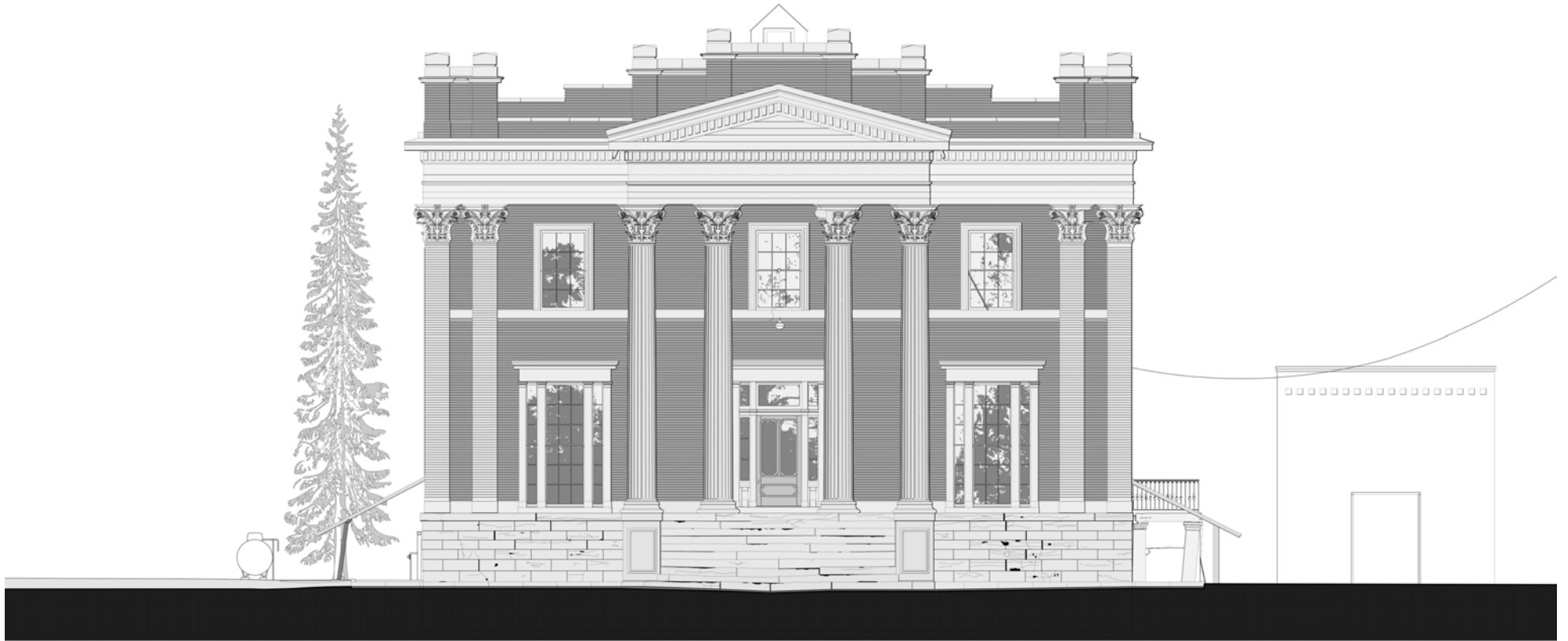
Principal Floor Plan



Second Floor Plan



Attic Floor Plan



North Elevation



South Elevation

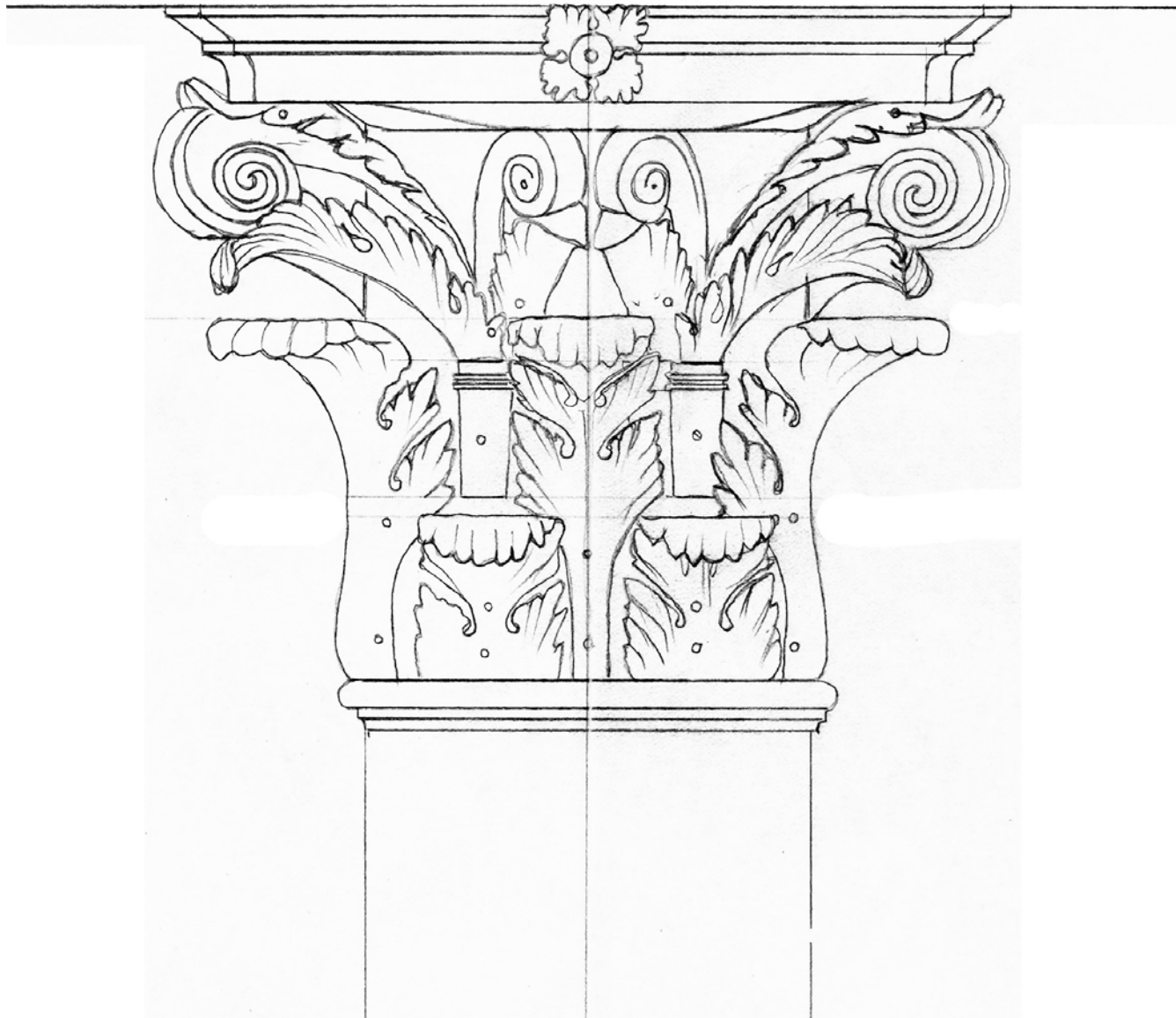


East Elevation





West Elevation



Measured by Richard Aurelius and Stewart Stoltz, B.Arch, October-November 2007. Measured and drawn by Geoffrey B. Bell B.A (Arch.) and Amanda K. Loughlin, B. Int. Arch, M.H.P. May 2008-September 2009. Project direction by Anthony Eardley, ARIBA, FRAIC, Hon. AIA